

INTERNATIONAL METAL ENGINEERING

MODEL 1080WL/SL WITH TRANSMITTER OR TERMINAL BLOCK

- EXPLOSION PROOF CERTIFIED
- IP66/68 CONSTRUCTION
- WIDE SELECTION OF CONDUIT SIZES
- OPTION FOR A CUSTOMIZED SS NAMEPLATE
- WIDE RANGE OF ACCESSORIES



Introduction

Material of Construction:

SS 316 / Copper free Aluminum

Certification:

ATEX/IECEX Explosion Proof Certified and IP66/68

Connections

½" NPT, ¾" NPT, M20x1.5P

Surface Finishing

Electro-Polished / Epoxy Coated

"O" Ring

Hydrogenated Nitrile

Weight

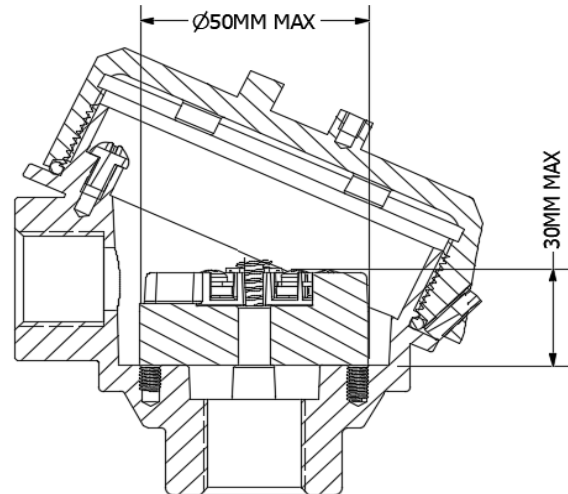
SS316 = 1.1 KG (2.4 lbs); Aluminum = 0.6KG (1.3 lbs)

Accessories

SS Ball Chain, Terminal Block(Ceramic/Bakelite, Optional)
Custom Designed SS Nameplate

Dimensions

Assembly Drawing



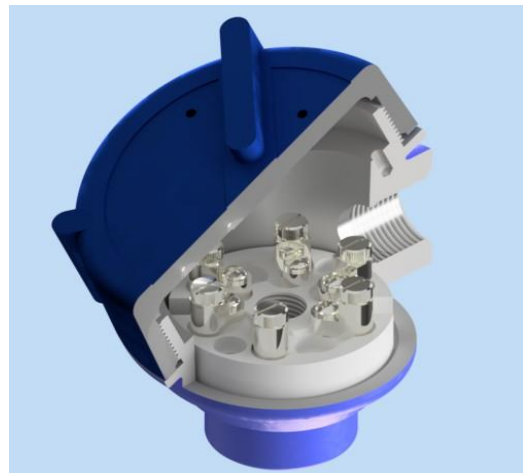
Certification System



ATEX II 2GD
Ex d IIC T6 Gb IP66/IP68
Ex tb IIIC 85°C Db (Ta = -40°C to 70°C)



Ex d IIC T6 Gb IP66/IP68
Ex tb IIIC 85°C Db (Ta = -40°C to 70°C)



INTERNATIONAL METAL ENGINEERING

MODEL 1080WL/SL WITH TRANSMITTER OR TERMINAL BLOCK

The 1080 Series Thermocouple Head Assembly utilises the 1080 series Thermocouple Head which is certified as an Ex Component under certificate numbers Sira 09ATEX1023U. The Thermocouple Head Assembly may be populated with either a ceramic terminal block or an encapsulated transmitter circuit. The maximum power dissipation of the terminal block and transmitter is less than 3 W. It is installed by International Metal Engineering and supplied as a complete assembly. The assemblies have the following part numbers:

Ordering Information for Explosion Proof 1080 Series Thermocouple Head Assembly

Model	Description															
1080WL	ATEX / IECEx Ex-Proof Certified IP66 / IP68, Aluminium Thermocouple Head Assembly															
1080SL	ATEX / IECEx Ex-Proof Certified IP66 / IP68, Stainless Steel Thermocouple Head Assembly															
<div style="display: flex; flex-direction: column; align-items: center;"> <div style="margin-bottom: 10px;">↓</div> <div style="margin-bottom: 10px;">↓</div> <div style="margin-bottom: 10px;">↓</div> </div>	<table border="1"> <thead> <tr> <th>Code</th> <th>Device specification</th> </tr> </thead> <tbody> <tr> <td>C6</td> <td>Dual post, 6 Position Ceramic Terminal Block</td> </tr> <tr> <td>B6</td> <td>Dual post, 6 Position Bakelite Terminal Block.</td> </tr> <tr> <td>HH</td> <td>Head Mounted Transmitter with Hart (Refer Page 3)</td> </tr> <tr> <td>HN</td> <td>Head Mounted Transmitter (Refer Page 3)</td> </tr> <tr> <td>XX</td> <td>Any specified terminal block/electronics device with power dissipation is less than 3.0 W, Maximum outer diameter of 50.0 mm & height of 30.0 mm</td> </tr> </tbody> </table>	Code	Device specification	C6	Dual post, 6 Position Ceramic Terminal Block	B6	Dual post, 6 Position Bakelite Terminal Block.	HH	Head Mounted Transmitter with Hart (Refer Page 3)	HN	Head Mounted Transmitter (Refer Page 3)	XX	Any specified terminal block/electronics device with power dissipation is less than 3.0 W, Maximum outer diameter of 50.0 mm & height of 30.0 mm			
	Code	Device specification														
	C6	Dual post, 6 Position Ceramic Terminal Block														
	B6	Dual post, 6 Position Bakelite Terminal Block.														
	HH	Head Mounted Transmitter with Hart (Refer Page 3)														
	HN	Head Mounted Transmitter (Refer Page 3)														
	XX	Any specified terminal block/electronics device with power dissipation is less than 3.0 W, Maximum outer diameter of 50.0 mm & height of 30.0 mm														
	<table border="1"> <thead> <tr> <th>Code</th> <th>Conduit Size (T1)</th> <th>Instrument Connection (T2)</th> </tr> </thead> <tbody> <tr> <td>-01</td> <td>3/4" NPT</td> <td>1/2" NPT</td> </tr> <tr> <td>-02</td> <td>1/2" NPT</td> <td>1/2" NPT</td> </tr> <tr> <td>-08</td> <td>M20x1.5P</td> <td>1/2" NPT</td> </tr> <tr> <td>-33</td> <td>3/4" NPT</td> <td>3/4" NPT</td> </tr> </tbody> </table>	Code	Conduit Size (T1)	Instrument Connection (T2)	-01	3/4" NPT	1/2" NPT	-02	1/2" NPT	1/2" NPT	-08	M20x1.5P	1/2" NPT	-33	3/4" NPT	3/4" NPT
Code	Conduit Size (T1)	Instrument Connection (T2)														
-01	3/4" NPT	1/2" NPT														
-02	1/2" NPT	1/2" NPT														
-08	M20x1.5P	1/2" NPT														
-33	3/4" NPT	3/4" NPT														

1080SL - HH -01 ← Typical Model Number

Terminal Blocks



Dual post, 6 Position Ceramic Terminal Block



Dual post, 6 Position Bakelite Terminal Block